

# QUADRAX

— U T I L I T Y —

## WINCH BRACKETS WITH OR WITHOUT ROLLER FAIRLEAD

QUADRAX

Model	Year	With roller Fairlead	Without roller Fairlead	2500/2600 3600
<b>Arctic Cat</b>				
250 4X4 Man	01-05		15-11572	X
300 Man	01-05		15-11572	X
300	2014		15-11542	X
350	2012		15-11542	X
366 4X4 Auto	2008		15-11569	X
375 Auto	2002		15-11572	X
400	13-14		15-11542	X
400/400i Man / Auto	02-05		15-11572	X
425	2012		15-11542	X
450	13-14		15-11542	X
500/500i Man / Auto	02-05		15-11572	X
500 TRV 2 Place	04-06		15-11572	X
650 V2 Auto	04-06		15-11572	X
650 Prowler	06-09		356-6123	X
<b>Can Am-BRP</b>				
Outlander 400	03-06		15-11598	X
<b>Jianshe</b>				
JS400 Mountain Lion	07-09		15-11502	X
<b>Honda</b>				
Pioneer 1000	2016		15-11675	X
TRX 250 EX	2003	356-6116		X
TRX 300 (All)	93-00		15-11588	X
TRX 350 FE/FM Rancher	00-03		15-11575	X
TRX 350 FE/FM Rancher	04-06		15-11583	X
TRX 400 Foreman	95-03		15-11559	X
TRX 400 Foreman	04-07		15-11583	X
TRX 420 Rancher All	07-13		15-11507*	X
TRX 420 Rancher except PG	14-15		15-11505	X
TRX 420 Rancher	2016		15-11672	X
TRX 450 FE Foreman All	98-01		15-11559	X
TRX 450 FE Foreman	02-04		15-11561	X
TRX 450 FM Foreman	98-04		15-11559	X
TRX 500 Foreman	05-07		15-11539	X
TRX 500 Foreman	07-08		15-11541	X
TRX 500 Foreman	08-11		15-11541	X
TRX 500 Foreman	12-13		15-11516	X
TRX 500 Foreman	14-16		15-11505	X
TRX 500 Rubicon	01-03		15-11553	X
TRX 500 Rubicon	2004		15-11585	X
TRX 500 Rubicon	05-06		15-11539	X
TRX 500 Rubicon	07-14		15-11541	X
TRX 500 Rubicon	15-16		15-11672	X
TRX 650 Rincon	03-05		15-11562	X
TRX 680 Rincon	06-16		15-11562	X
<b>Kawasaki</b>				
Bayou 250	02-04	356-6114		X
KVF 360	02-03		15-11590	X
KVF 650 V-twin	02-05		15-11534	X
KVF 650 Brute Force	05-14		15-11515	X
KVF 650i Brute Force	06-14		15-11515	X
KVF 700 V-Twin	2004		15-11581	X
KVF 700	2006		15-11503	X
KVF 750i Brute Force	05-16		15-11515	X
Mule 3010	05-06	356-6124		
Mule 500 2x4	97-02	356-6105		X
Teryx 750	08-09		15-11501	X
<b>Polaris</b>				
ATP 500	2004		15-11592	X
Diesel 455	96-01		15-11592	X
Magnum 325	00-02		15-11592	X
Magnum 330	03-05		15-11592	X
Magnum 500	99-02		15-11592	X
RZR Ranger 800, 800S	08-14		15-11601	X

\* Installation with front bumper (Must be mounted outside the frame)

# QUADRAX

— U T I L I T Y —

## WINCH BRACKETS WITH OR WITHOUT ROLLER FAIRLEAD

QUADRAX

Model	Year	With roller Fairlead	Without roller Fairlead	2500/2600 3600
<b>Polaris (cont.)</b>				
RZR Ranger 900XP	11-14		15-11602	X
RZR Ranger 900XP	15-16		15-11605	
RZR Ranger 1000XP	14-16		15-11603	X
Sportsman 335	98-00		15-11592	X
Sportsman 400	01-03		15-11592	X
Sportsman 400	2004		15-11596	X
Sportsman 400	05-06		15-11511	X
Sportsman 400 HO, 500 HO	11-14		15-11510	X
Sportsman ETX	15-16		15-11510	X
Sportsman 450	06-07		15-11511	X
Sportsman 450 HO	2016		15-11510	X
Sportsman 500	97-03		15-11592	X
Sportsman 500	2004		15-11596	X
Sportsman 500	05-06		15-11511	X
Sportsman 500 6X6	2006		15-11592	X
Sportsman 500 6X6	2008		15-11593	X
Sportsman 500 Touring	11-13		15-11510	X
Sportsman 500 X2, HO	06-10		15-11511	X
Sportsman 550 Touring	10-14		15-11510	X
Sportsman 550 XP	09-14		15-11513	X
Sportsman 550 X2	10-14		15-11510	X
Sportsman 570	14-16		15-11510	X
Sportsman 570 Touring	14-16		15-11510	X
Sportsman 570 X2	15-16		15-11510	X
Sportsman 600	03-04		15-11571	
Sportsman 600	03-04		15-11596	X
Sportsman 700	03-04		15-11571	
Sportsman 700	03-04		15-11596	X
Sportsman 700	05-07		15-11511	X
Sportsman 800	05-07		15-11511	X
Sportsman 800 HO	11-14		15-11510	X
Sportsman 800 Touring	08-09		15-11511	X
Sportsman 850 Touring	10-16		15-11510	X
Sportsman 850 XP	09-16		15-11513	X
Sportsman 1000	15-16		15-11510	X
Sportsman 1000 Touring	15-16		15-11510	X
Scrambler 850	13-16		15-11510	X
Sportsman Big Boss	14-16		15-11510	X
Xpedition 425	00-02		15-11592	X
Xplorer 250	2001	356-4860		X
Xplorer 250	2002	356-5636		X
Xplorer 300	96-99		15-11592	X
Xplorer 400	95-99		15-11592	X
Xplorer 400	01-03		15-11592	X
Xplorer 500	96-98		15-11592	X
<b>Suzuki</b>				
Eiger 400 Man / Auto	02-07		15-11552	X
King Quad 400	08-09		15-11540	X
King Quad 450	07-08		165-11514	X
King Quad 450	09-10		165-11514	X
King Quad 500	09-10		165-11514	X
King Quad 450/500	11-14		165-11514	X
King Quad 500	15-16		165-11514	
King Quad 700	05-07		165-11514	X
King Quad 750	08-16		165-11514	X
Twin Peak 700	04-05		15-11595	X
Vinson 500	02-07		15-11552	X
<b>Sym</b>				
Quadlander 600 Auto	2009		15-11512	X
<b>Yamaha</b>				
Bruin 350	04-09		15-11668	X
Grizzly 550	09-14		15-11670	X
Grizzly 660	02-08		15-11667	X
Grizzly 700	07-15		15-11670	X
Grizzly 700/Kodiak 700	2016		15-11674	X
Kodiak 350	07-08		15-11671	X
Kodiak 400	03-08		15-11668	X
Kodiak 450	03-09		15-11668	X
Kodiak 450	11-15		15-11668	X
Rhino 450	06-08		15-11544	X
Rhino 660	04-07		15-11544	X
Rhino 700	2008		15-11544	X
Wolverine 450	06-08		15-11669	X

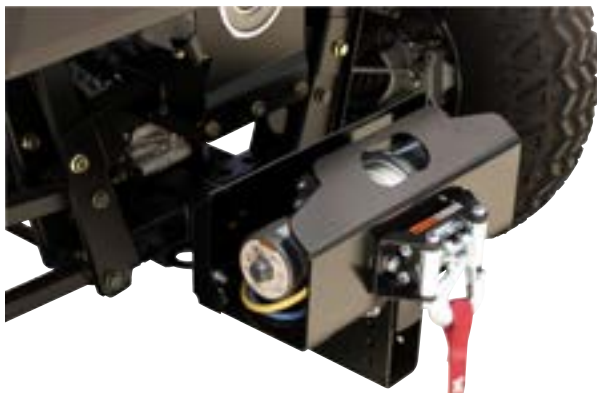
\* Installation with front bumper (Must be mounted outside the frame)



**QUADRAX**  
— U T I L I T Y —

**Roller fairlead**

15-1600	Roller fairlead
15-1601	Roller fairlead
15-1700	Roller fairlead
15-1602	Replacement plate for 15-1601

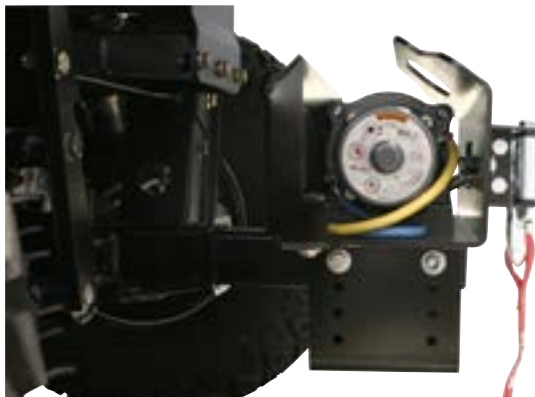


**QUADRAX**  
— U T I L I T Y —

**Removable Universal Winch Support with 2-in hitch support**

This universal winch support installs on any 2-in hitch receivers and can be used with Quadrax or Warn winches. This support let's you install a trailer hitch after the winch. The kit includes the winch support and wire set 47-70928 (winch and hitch with ball not-included)

**Important notice: Never use a winch stronger than 2500lbs of force if it is mounted on an aftermarket 2-in hitch support added to the ATV**



15-22544	Winch support with 2-in hitch receiver included
----------	---

**QUADRAX**  
— U T I L I T Y —

**Removable and Adjustable Universal Winch Support - adapts to 2-in hitch receiver**

This universal winch support installs on any 2-in hitch receivers and can be used with Quadrax or Warn winches. It can be adjusted to 4 positions allowing installation on ATV's with low-mounted hitch receivers. **Maximum adjustment: 4 inches.** The kit includes the winch support and wire set 47-70928 (winch and hitch with ball not-included)

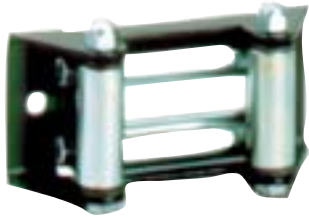
**Important notice: Never use a winch stronger than 2500lbs of force if it is mounted on an aftermarket 2-in hitch support added to the ATV**

15-22542	Adjustable height winch support - 4 positions
----------	---

# QUADRAX

UTILITY

## WINCH ACCESSORIES



**Roller fairlead**

**15-1600**



**Synthetic Cable**

**147-7031** Synthetic Rope (40ft)



**Steel cable**

**147-7029** Steel cable 40' 7/32



**Rubber shock absorber**

Rubber shock absorber for winch. Prevent the cable from breaking. Easy to install.

**147-7037**



**4T Snatch block**

**147-7033**



**Mounting plate**

**147-2019**



**Winch wireless remote assembly**

Includes: wireless remote, control box, and accessories. Fits all Quadrax winches. For security reason, the winch wireless remote has to be installed with mini-switch together and the red wire of mini-switch has to be connected to ATV key-switch. With ATV key-switch in off position, the remote and mini-switch can be on/off at same time, which will protect winch user from touching remote by mistake, also protect winch from starting accidentally or leaking electricity. Motovan will not take any responsibility in case of damage/injury because of wrong connections. This remote will fit most of winches in the market with right connection.

**147-7034** Remote Control assembly



**Quadrax handlebar mini rocker switch**

Allows the rider to operate the actuator without removing the hand from the grip.

**147-7028** Mini Switch sealed

ea



**147-7030**



**147-6033**



**147-6035**



**147-7129**



**147-7027**

**147-7129** Contactor

**147-7027** Contactor

**Remote control**

**147-7030** Cabled remote

**147-6035** Remote Control Socket

**147-6033** Remote control

# QUADRAX

— U T I L I T Y —

## PARTS FOR QUADRAX WINCH 2500



Illustration	Description
1	<b>147-7001</b> Motor end housing
2	<b>147-7002</b> Sun gear Stage 1
3	<b>147-7003</b> Carrier Assembly stage 1
4	<b>147-7004</b> Clutch return spring
5	<b>147-7005</b> Drive shaft
6	<b>147-7006</b> Drum Support
7	<b>147-7007</b> Dable protector
8	<b>147-7008</b> Spool Assembly
9	<b>147-7009</b> Wire rope retention plug
10	<b>147-7010</b> Tie rod
11	<b>147-7011</b> Wire rope protector
12	<b>147-7012</b> Spool support
13	<b>147-7013</b> Carrier assembly stage 3
14	<b>147-7014</b> Carrier assembly stage 2
15	<b>147-7015</b> Sun Gear stage 2
16	<b>147-7016</b> Cam follower
17	<b>147-7017</b> Spacer

Illustration	Description
18	<b>147-7018</b> Clutch end housing
19	<b>147-7019</b> Freespool Dial retention ring
20	<b>147-7020</b> Freespool dial
21	<b>147-7021</b> Brushes
22	<b>147-7022</b> Housing
23	<b>147-7023</b> Motor
24	<b>147-7024</b> Handsaver strap
25	<b>147-7025</b> hook
26	<b>147-7026</b> Wiring assembly
27	<b>147-7035</b> Drum bushing
28	<b>147-7028</b> Mini Switch sealed
29	<b>147-7027</b> Contactor
30	<b>147-7030</b> Cabled remote
31	<b>147-7031</b> Synthetic Rope (40ft)
32	<b>147-7037</b> Metal & Rubber stop
33	<b>147-7033</b> 4T snatch Block
35	<b>147-2019</b> Fairlead, Plate Mounting

## PARTS FOR QUADRAX WINCH 2600



Illustration	Description
1	<b>147-7101</b> Motor end housing
2	<b>147-7102</b> Brake disc
3	<b>147-7103</b> Rectangular twist spring
4	<b>147-7004</b> Clutch return spring
5	<b>147-7105</b> Abnormal sun gearstage 1
6	<b>147-7106</b> Carrier assembly stage 1
7	<b>147-7104</b> Abnormal blocks
8	<b>147-7108</b> Drive shaft
9	<b>147-7109</b> Drum support
10	<b>147-7010</b> Tie rod
11	<b>147-7111</b> Drum assembly
12	<b>147-7110</b> Cable protector
13	<b>147-7113</b> Drum bushing
14	<b>147-7114</b> X-ring, seal
15	<b>147-7115</b> Carrier assembly stage 3
16	<b>147-7016</b> Cam follower

Illustration	Description
17	<b>147-7117</b> Sun gear stage 2
18	<b>147-7116</b> Carrier assembly stage 2
19	<b>147-7119</b> O-ring,seal
20	<b>147-7120</b> Clutch end housing
21	<b>147-7021</b> Brushes
22	<b>147-7122</b> Freespool dial
23	<b>147-7121</b> Freespool dial retention ring
24	<b>147-7024</b> Handsaver strap
25	<b>147-7025</b> hook
26	<b>147-7124</b> Motor housing assembly
27	<b>147-7125</b> Motor
28	<b>147-7028</b> Mini Switch sealed
29	<b>147-7129</b> Contactor
30	<b>147-7128</b> Wiring assembly
31	<b>147-7131</b> O-ring,seal

# QUADRAX

— U T I L I T Y —

## PARTS FOR QUADRAX 3600 WINCH



Illustration		Description
1	<b>147-7201</b>	Gasket, gear
2	<b>147-7202</b>	Gear box right & left
3	<b>147-7203</b>	Carrier assembly stage1
4	<b>147-7204</b>	Carrier assembly stage2
5	<b>147-7205</b>	Carrier assembly stage3
6	<b>147-7206</b>	End cover
7	<b>147-7207</b>	Bolts m6
8	<b>147-7208</b>	Cam follower
9	<b>147-7209</b>	Freespool dial retention ring
10	<b>147-7210</b>	Freespool knob
11	<b>147-7211</b>	Bearing
12	<b>147-7212</b>	Motor support
13	<b>147-7213</b>	Drum support, motor
14	<b>147-7214</b>	Drum bushing
15	<b>147-7215</b>	Drum assembly
16	<b>147-7216</b>	X-ring, seal

Illustration		Description
17	<b>147-7217</b>	Drive shaft
18	<b>147-7218</b>	Tie rod
19	<b>147-7219</b>	Drum support, gear
20	<b>147-7220</b>	Abnormal sun gear stage 1
21	<b>147-7221</b>	Abnormal block
22	<b>147-7222</b>	Rectangular twist spring
23	<b>147-7223</b>	Brake disc
24	<b>147-7024</b>	Handsaver strap
25	<b>147-7025</b>	hook
26	<b>147-7224</b>	Motor housing assembly
27	<b>147-7225</b>	Motor
28	<b>147-7028</b>	Mini Switch sealed
29	<b>147-7129</b>	Contactora
30	<b>147-7128</b>	Wiring assembly
31	<b>147-7231</b>	Drive shaft coupler
32	<b>147-7232</b>	O-ring, seal
33	<b>147-7233</b>	Clutch return spring
34	<b>147-7234</b>	Brushes

## PARTS FOR QUADRAX 4200 WINCH

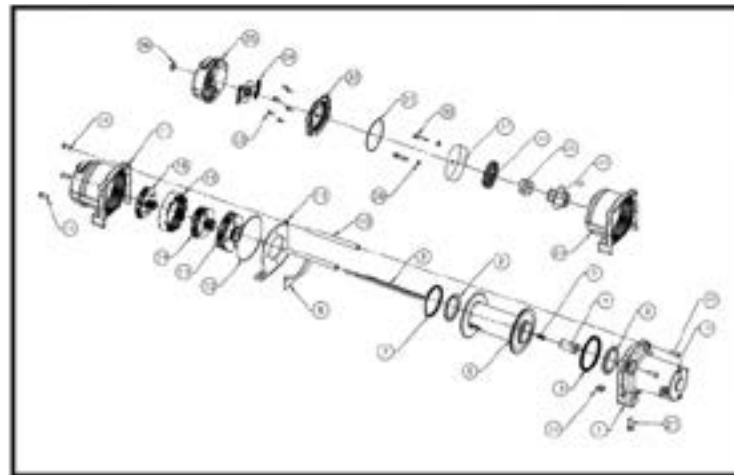


Illustration		Description
1	<b>147-7301</b>	Drum support, motor
2	<b>147-7302</b>	Drum bushing
3	<b>147-7303</b>	X- ring seal
4	<b>147-7304</b>	Drive shaft coupler
5	<b>147-7305</b>	Compression spring
6	<b>147-7306</b>	Drum assembly
7	<b>147-7307</b>	X- ring seal
8	<b>147-7308</b>	Drive shaft
9	<b>147-7309</b>	Wire rope protector
10	<b>147-7310</b>	Tie rod
11	<b>147-7311</b>	Drum support, gear
12	<b>147-7312</b>	O- ring seal
13	<b>147-7313</b>	Carrier assembly stage 3
14	<b>147-7314</b>	Carrier assembly stage 2
15	<b>147-7315</b>	Ring gear
16	<b>147-7316</b>	Carrier assembly stage 1
17	<b>147-7317</b>	Clutch end housing assembly
18	<b>147-7318</b>	Bolts m6

Illustration		Description
19	<b>147-7319</b>	Motor assembly
20	<b>147-7320</b>	Bars bolts m6
21	<b>147-7321</b>	Bottom bolts m8
22	<b>147-7322</b>	Square nuts m8
23	<b>147-7323</b>	Clutch end housing
24	<b>147-7324</b>	Abnormal sun gear stage
25	<b>147-7325</b>	Abnormal blocks
26	<b>147-7326</b>	Rectangular twist spring
27	<b>147-7327</b>	Brake disc
28	<b>147-7329</b>	X- ring seal
29	<b>147-7330</b>	Clutch pins
30	<b>147-7331</b>	O- ring seal
31	<b>147-7332</b>	Aluminum end cover
32	<b>147-7333</b>	Self-tapping screws
33	<b>147-7334</b>	Clutch stents
34	<b>147-7335</b>	Freespool knob
35	<b>147-7336</b>	Freespool dial retention ring

## QUADRAX 2500 WINCH REPLACEMENT PARTS AND ACCESSORIES



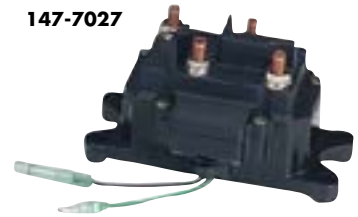
### Mounting plate

<b>147-2019</b>	Fairlead, Plate Mounting
-----------------	--------------------------

**147-6035**



**147-7027**



<b>147-6035</b>	Remote Control Socket
<b>147-7027</b>	Contactors



### Quadrax handlebar mini rocker switch

Allows the rider to operate the actuator without removing the hand from the grip.

<b>147-7028</b>	Mini Switch sealed
-----------------	--------------------



**147-6033**

### Remote control

<b>147-6033</b>	Remote control
-----------------	----------------

## CARTEC 2000 WINCH REPLACEMENT PARTS AND QUADRAX 2000/2500

Illustration	Description	
1	<b>147-6001</b> Gear Housing, Cluth Ass'y	(1)
1	<b>147-6054</b> Aluminum Gear Housing, Cluth Ass'y (Quadrax 2500)	(1)
2	<b>147-6002</b> Square Nut	(4)
3	<b>147-6003</b> Cam Follower	(1)
5	<b>147-6005</b> Sun Gear, Stage 2	(1)
6	<b>147-6006</b> Carrier Ass'y, Stage 2	(1)
7	<b>147-6007</b> Carrier Ass'y, Stage 3	(1)
10	<b>147-6010</b> Cable Protector	(2)
14	<b>147-6014</b> Drive Shaft	(1)
16	<b>147-6016</b> Clutch Spring	(1)
17	<b>147-6017</b> Carrier Ass'y, Stage 1	(1)
18	<b>147-6018</b> Sun Gear, Stage 1	(1)
19	<b>147-6019</b> Gear Housing, Motor Ass'y	(1)
19	<b>147-6055</b> Aluminum Gear Housing, Motor Ass'y (Quadrax 2500)	(1)
21	<b>147-6021</b> Socket Head Screw	(4)
22	<b>147-6022</b> Armature, Motor for 2000 winch	(1)
22, 23, 24	<b>147-6053</b> Armature, Motor for 2500 winch Motor, 12 VDC Cap Ass'y, Motor	(1)
23	<b>147-6023</b> Motor, 12 VDC	(1)
24	<b>147-6024</b> Cap Ass'y, Motor	(1)
28, 29	<b>147-6028</b> Cable Ass'y, 6ga, Black Cable Ass'y, 6ga, Red	(1)
33	<b>147-6033</b> Remote control	(1)
35	<b>147-2019</b> Fairlead, Plate Mounting	(1)
35	<b>147-6035</b> Remote Control Socket	(1)
41	<b>147-6041</b> Strap	(1)
47	<b>147-6052</b> Rubber cover for 147-6035	(1)



**15-1606**

### Quadrax 1700, Optional parts

<b>15-1606</b>	Adapter, for QUADRAX winch plate
----------------	----------------------------------

